

Ultramove

Safely relocate patients requiring minimal assistance with the Ultramove standing frame with adjustable base.

The **Ultramove** is a non-electric device offering a safe way to transfer patients that require minimal assistance. Patients simply step onto the footplate and elevate to a standing position, on their own or with some caregiver assistance. The seat pads are then swiveled into place so that the patient can comfortably sit during the transport. The Ultramove is also used for patients who may require assistance during ambulation. The footplate is removed and the patient ambulates holding onto the frame.

If the patient becomes tired and needs to rest, the seat pads can be flipped down. And the patient can rest. Once the patient is ready to ambulate again, the seat pads can be flipped up.

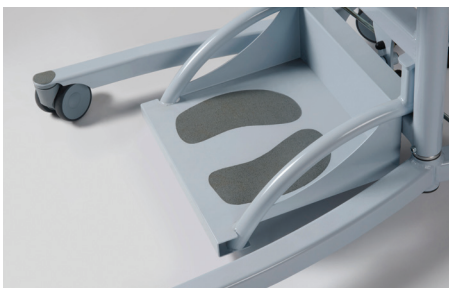
In this situation the Ultramove is used with patients who are fully mobile and can bear their own weight but who may tire easily.

Features

- High weight capacity of 400 lbs
- Adjustable seat angle for maximum patient comfort
- Easy roll casters for superior rollability and maneuverability
- Compact, space saving design
- Optional harness for additional convenience and safety
- Optional oxygen tank holder



The Ultra Move is a non-electric device offering a safe way to transfer patients that require minimal assistance.



Patients simply step onto the foot plate and elevate to a standing position, on their own or with some caregiver assistance.



The seat pads are swivel into place so that the patient can comfortably sit during the transport.



The device features a sleek, space-saving design and is easy to move or break with easy roll casters.